

Sandie Lush Welsh Cushion

Iâ Cnau Coco (Coconut Ice)

Printing the Pattern

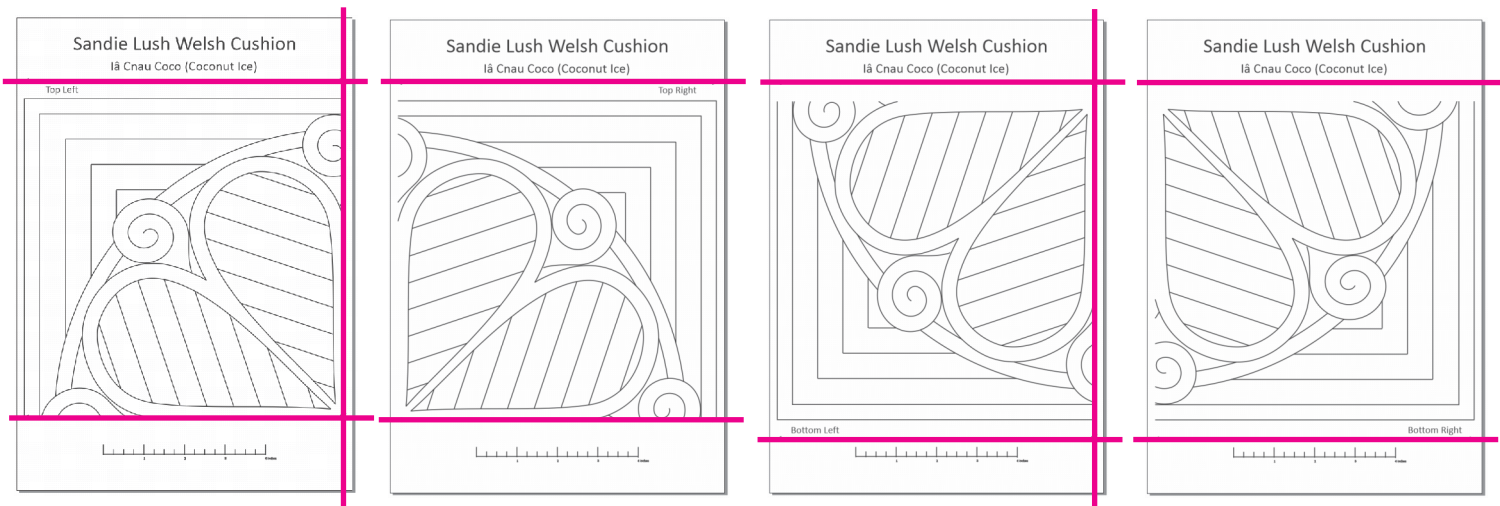
This 5-page pattern consists of this instruction sheet and four pattern quadrants that should be trimmed and taped together.

Check the dimension of the printed ruler (4", 10.15 cm) on one of the pattern sheets. It should be correct if your printer has a printable width of at least 7.875", 20 cm, and your PDF dialogue was set to print full-size/100%.

You can, of course, print at a smaller percentage if you want a smaller cushion.

Cutting the Pattern

Trim each page according to the dotted, arrowed lines on the pattern pages, extending the cuts to the edge of the paper as illustrated below.

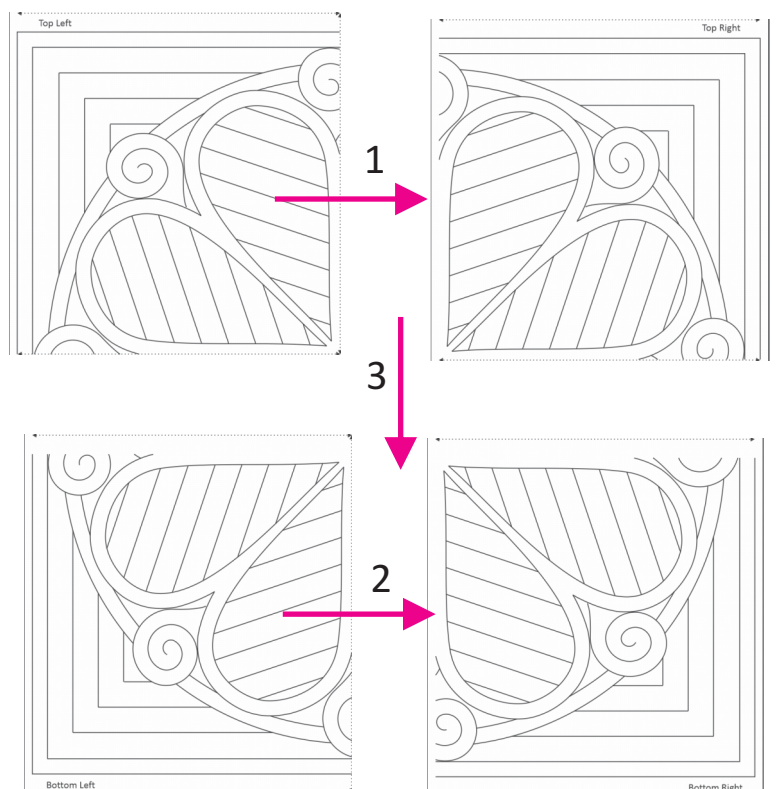


Joining the Trimmed Pattern

1) Place the right edge of the Top Left page on the left edge of the Top Right page. Align the pattern and tape into place.

2) Place the right edge of the Bottom Left page on the left edge of the Bottom Right page. Align the pattern and tape into place.

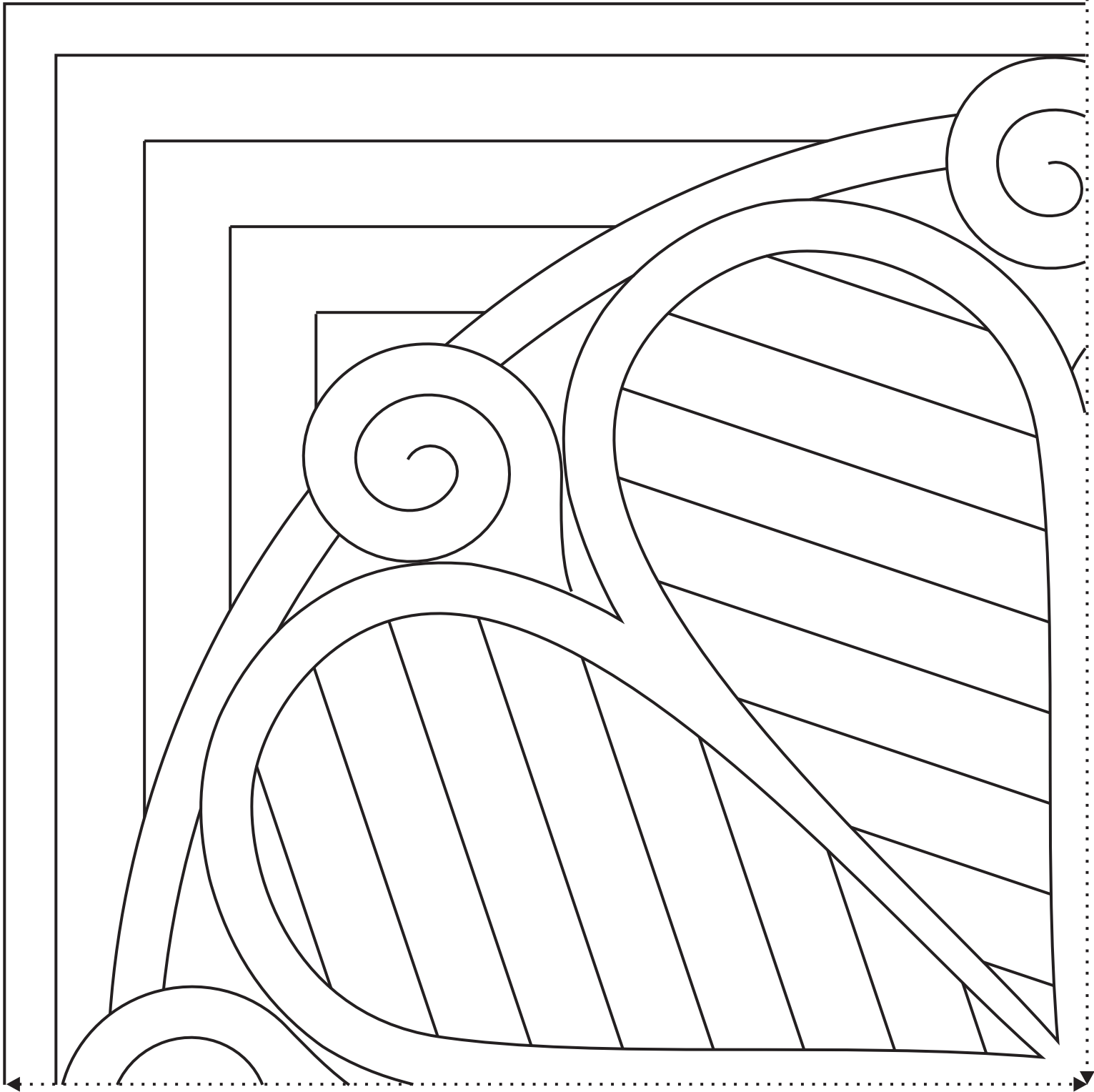
3) Place the lower edge of the upper taped pair on the upper edge of the lower taped pair. Align the pattern and tape into place.



Sandie Lush Welsh Cushion

Iâ Cnau Coco (Coconut Ice)

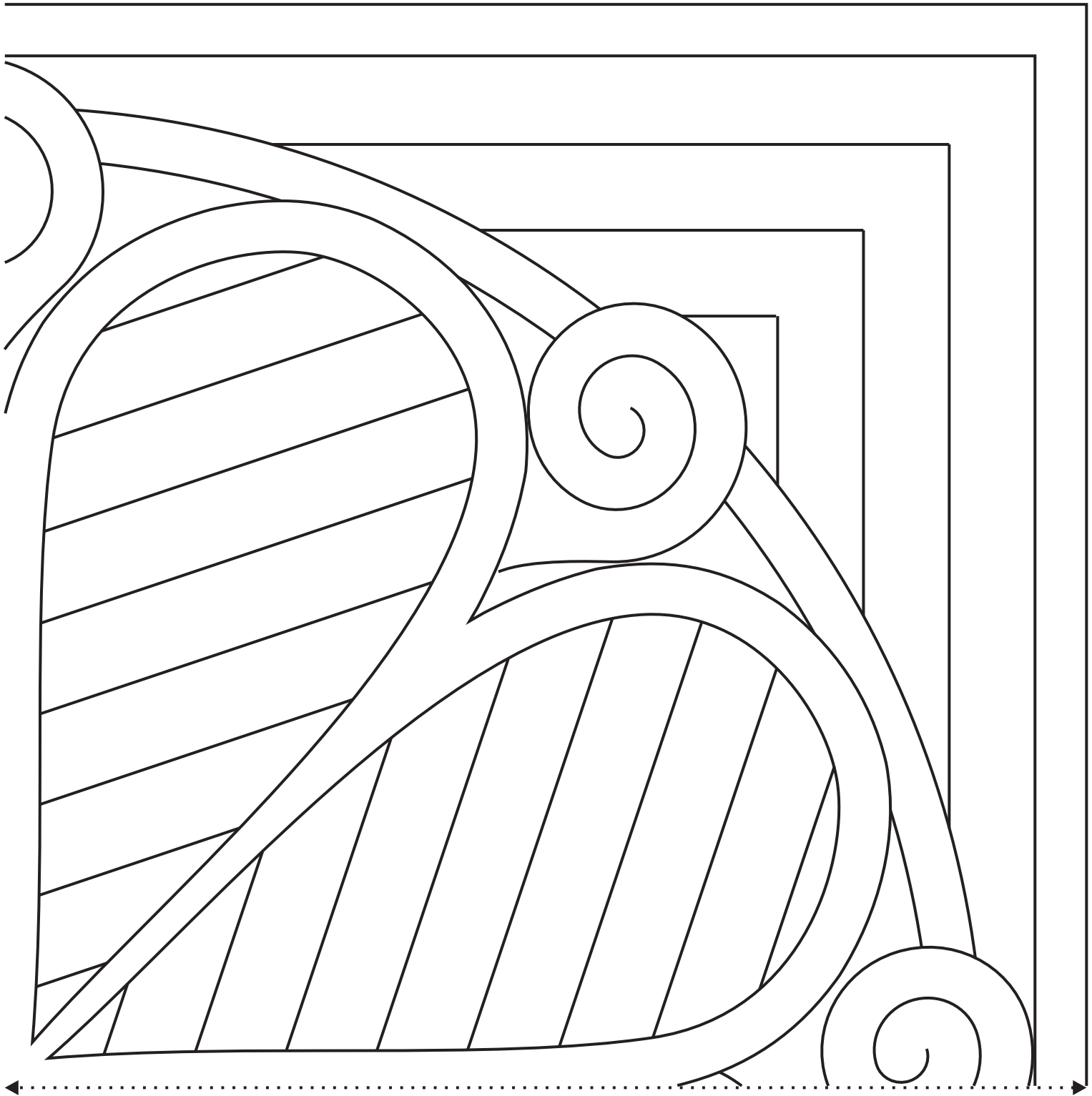
Top Left



Sandie Lush Welsh Cushion

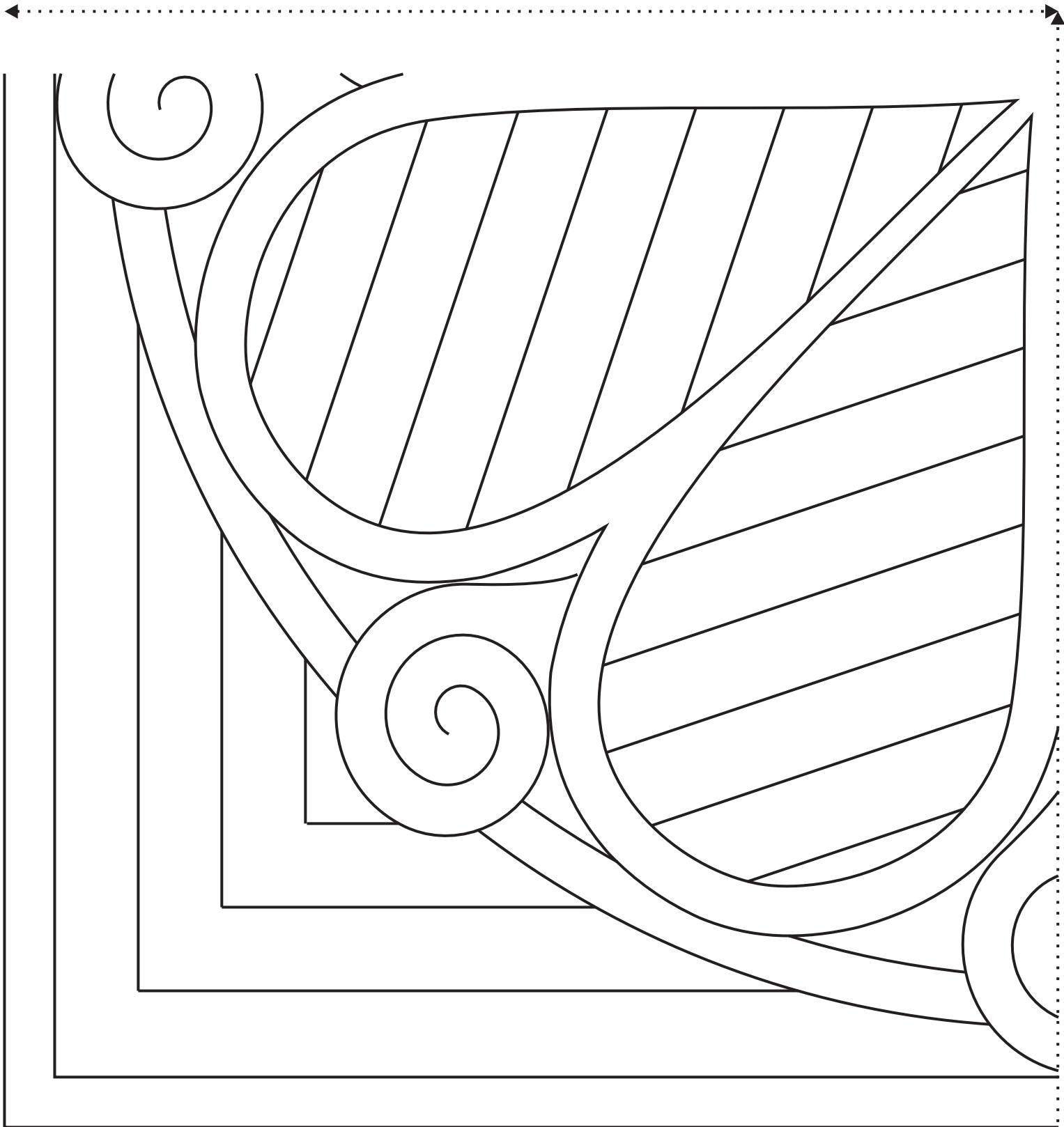
Iâ Cnau Coco (Coconut Ice)

Top Right



Sandie Lush Welsh Cushion

Iâ Cnau Coco (Coconut Ice)

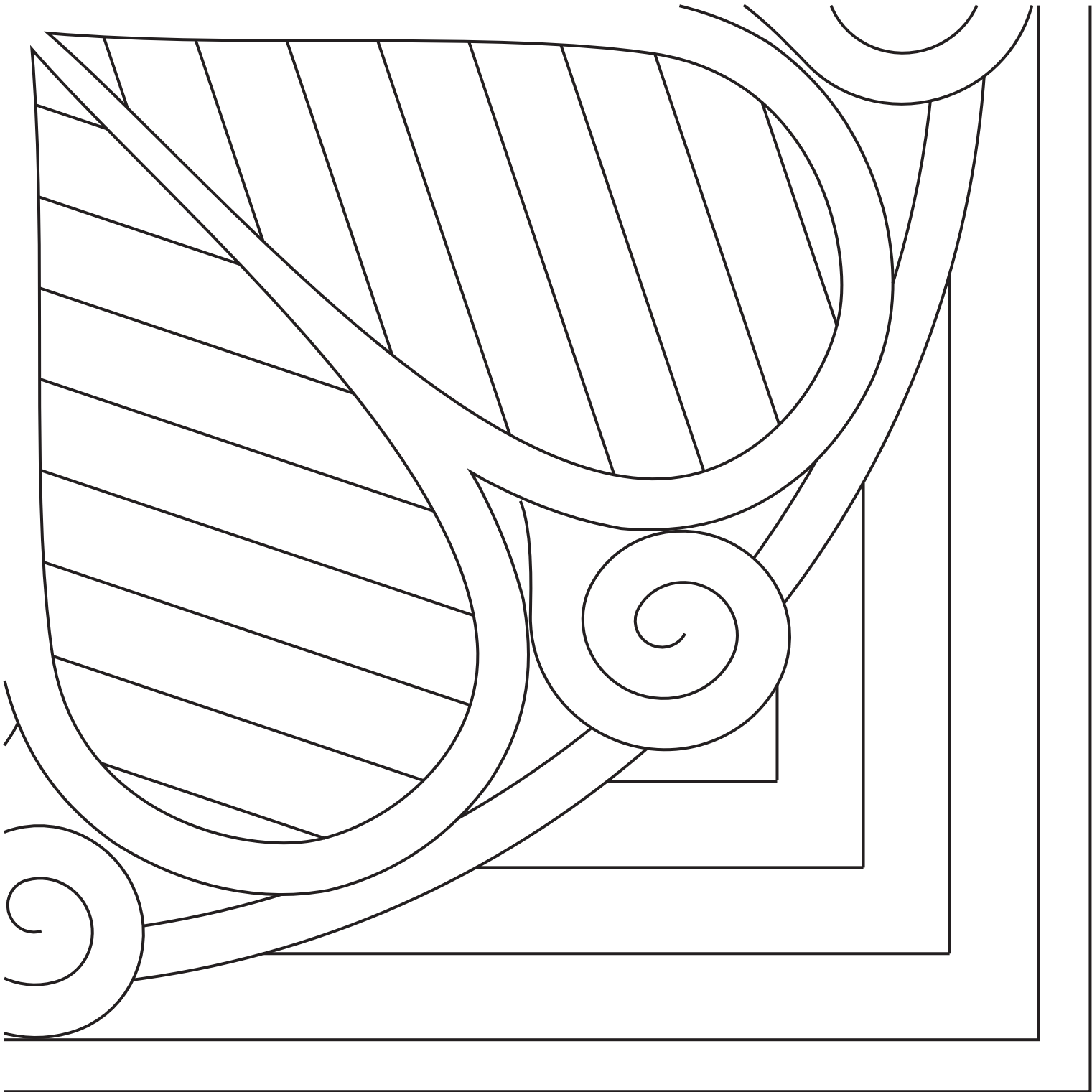


Bottom Left



Sandie Lush Welsh Cushion

Iâ Cnau Coco (Coconut Ice)



Bottom Right



1 2 3 4 inches